
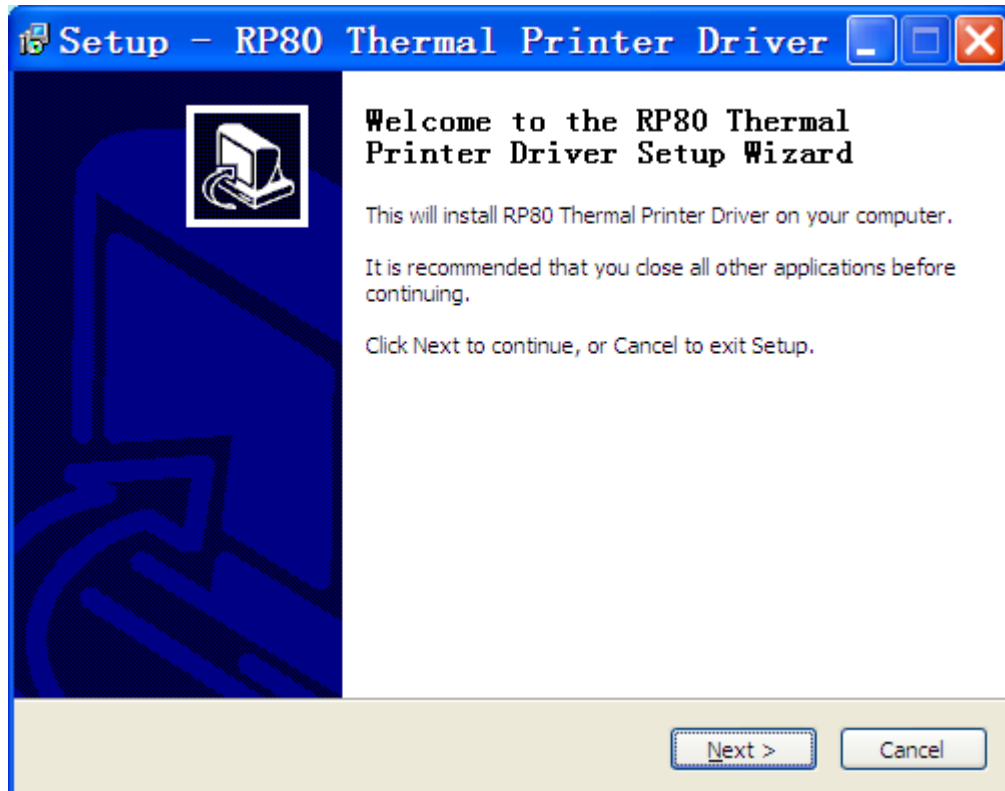
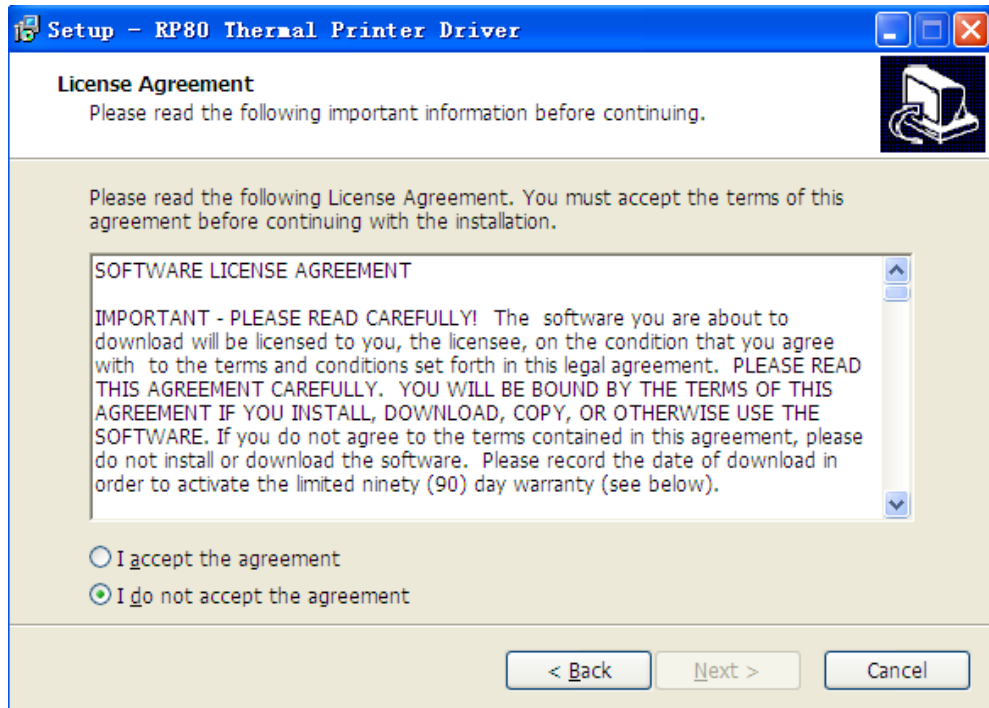


RP80 Driver Setup Guide (V1.0)

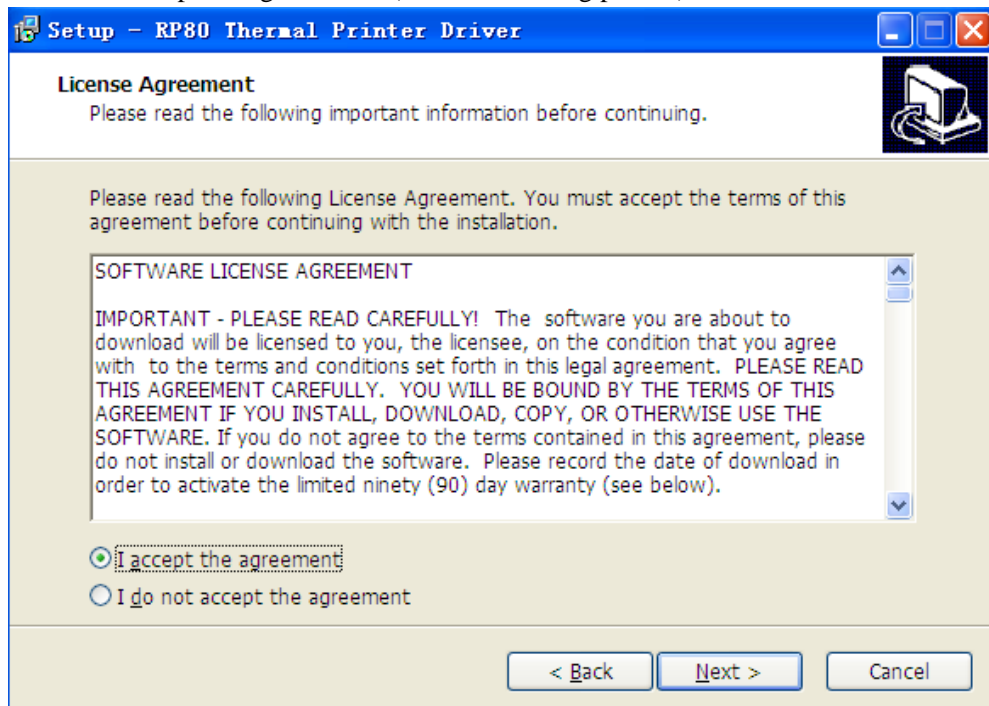
Run the  on the disk sent with the printer. Follow the steps (see the picture):



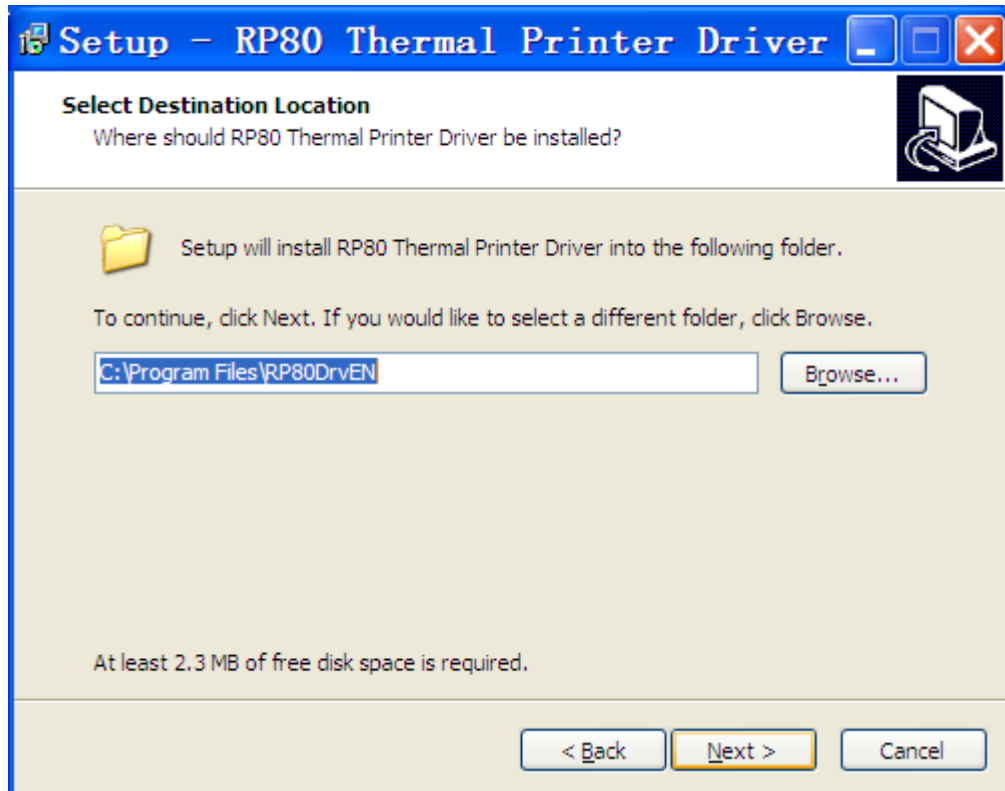
Then click "Next" (see the following picture).



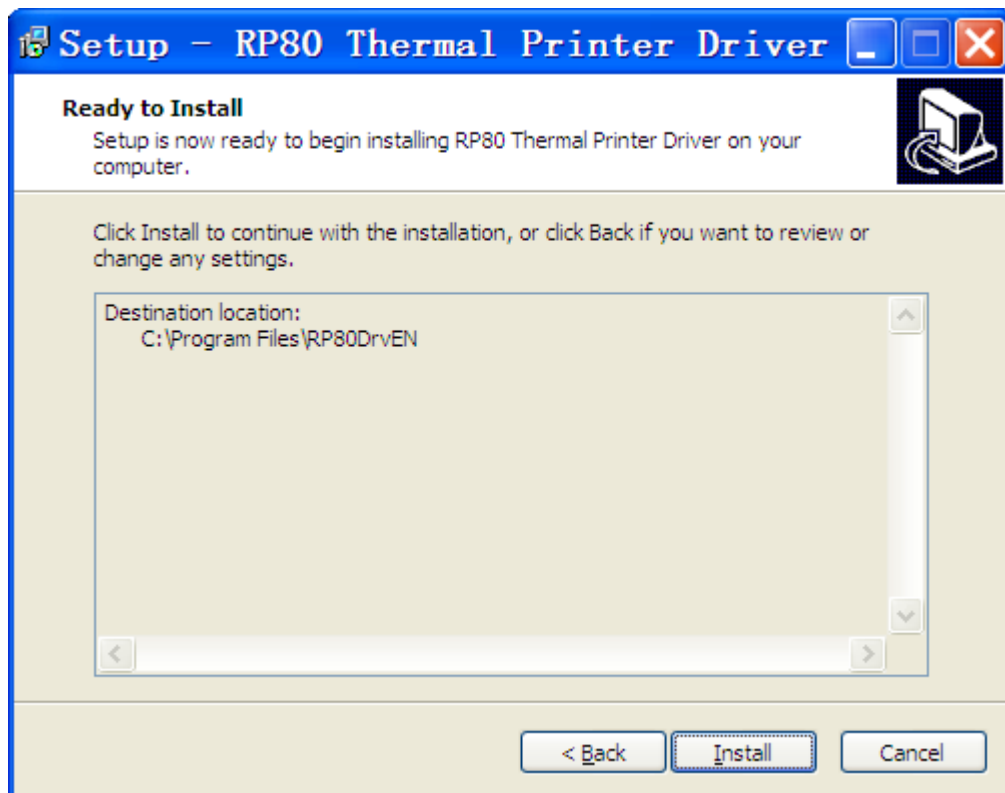
Choose “I accept the agreement”, (see the following picture).



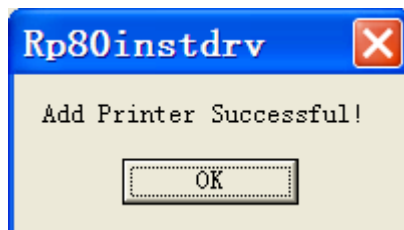
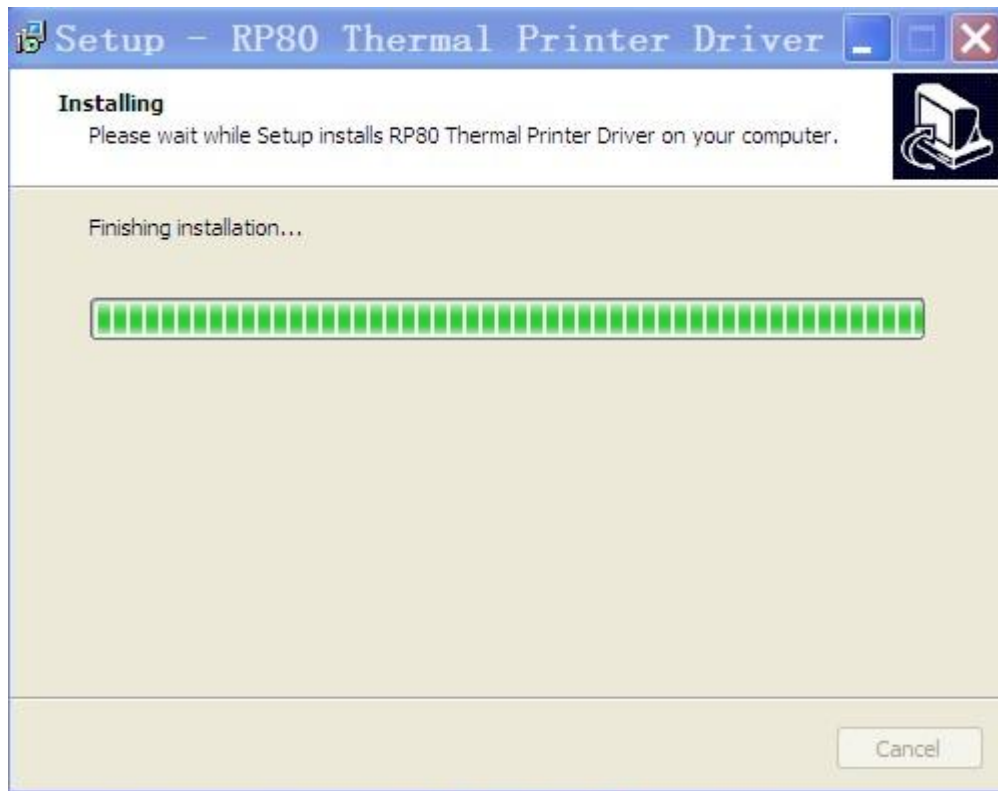
Then click “Next” (see the following picture).



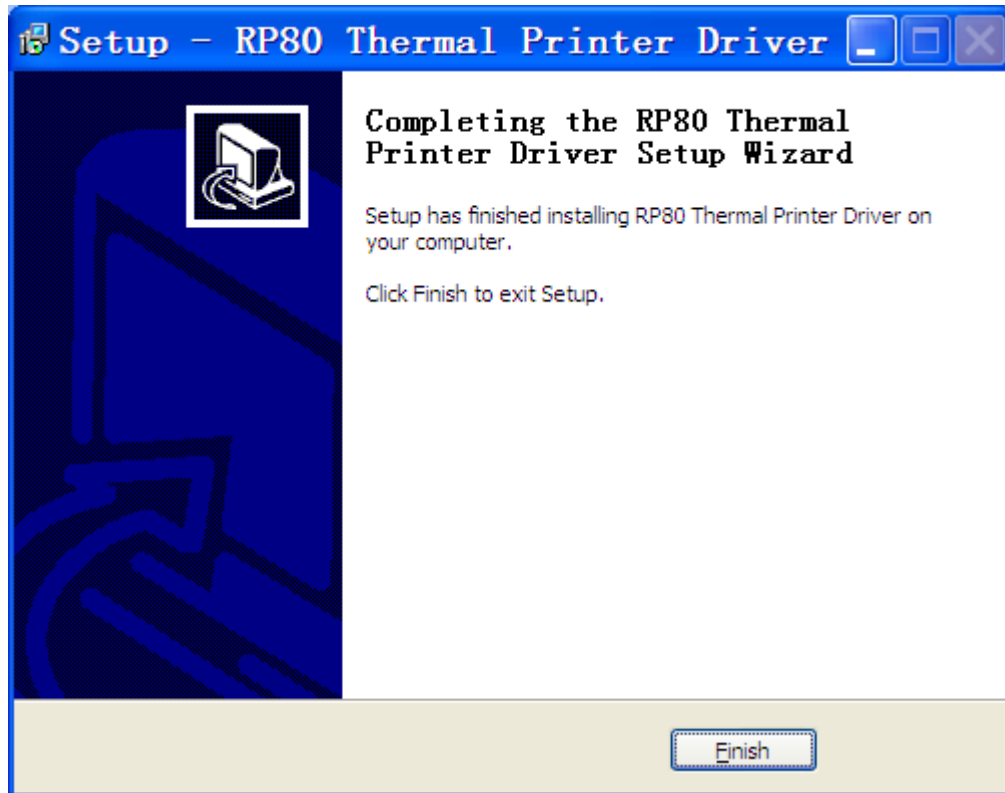
The driver is installed on the assigned file of C driver by default. If you would like to install on a different file, please click “Browse” and choose your file, then click “Next” (see the following picture).



Then click “Install” (see the following picture).



Click “OK” (see the following picture).

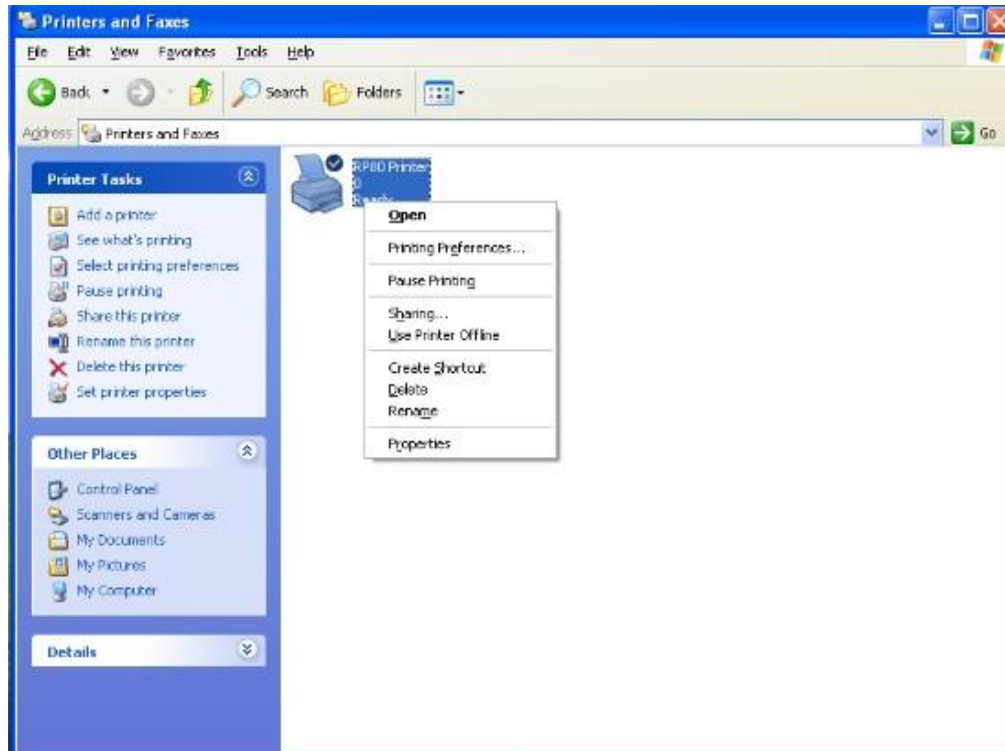


Click “Finish”, and the Printing Drive is installed on your computer.

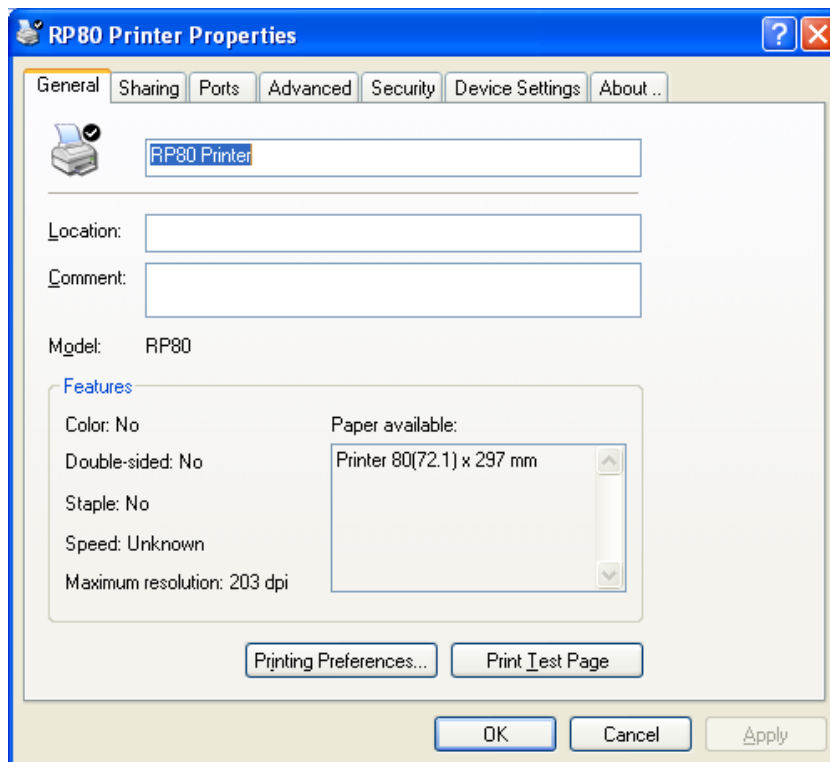
How to test the communication ports with RP80 Driver?

After installed RP80 driver, follow the steps:

"start"→"settings"→"printers and faxes"→"RP80 Printer"→" Properties"
(see the following picture).

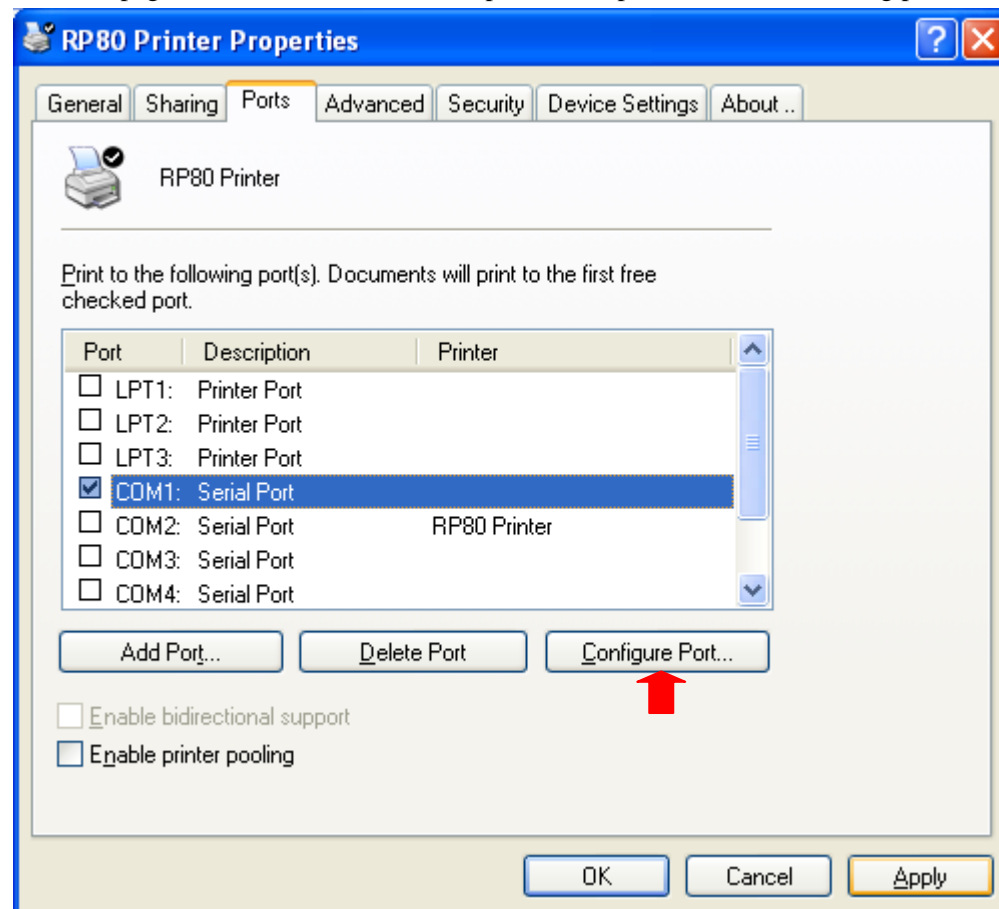


Pop up the RP80 properties window (see the following picture).

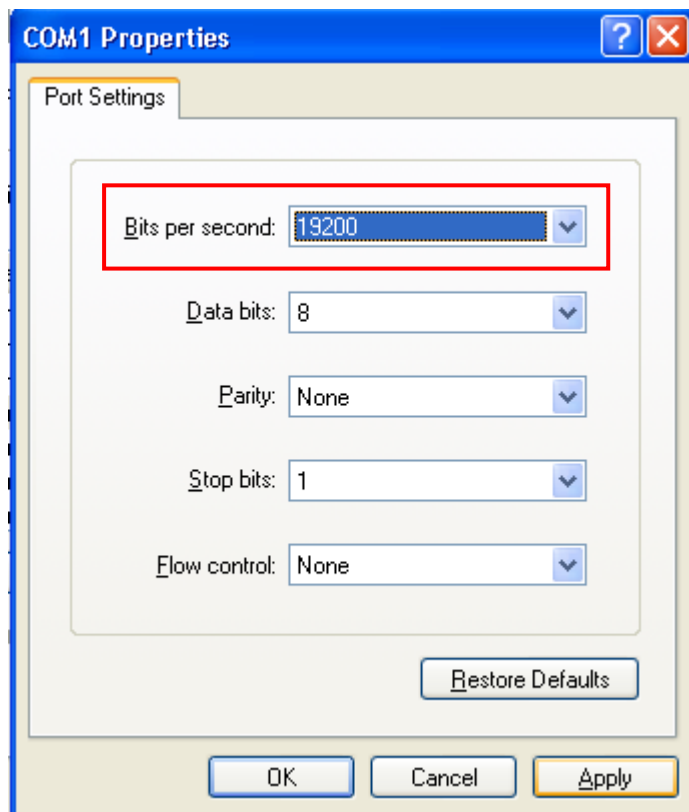


Test with the serial communication port for print test page

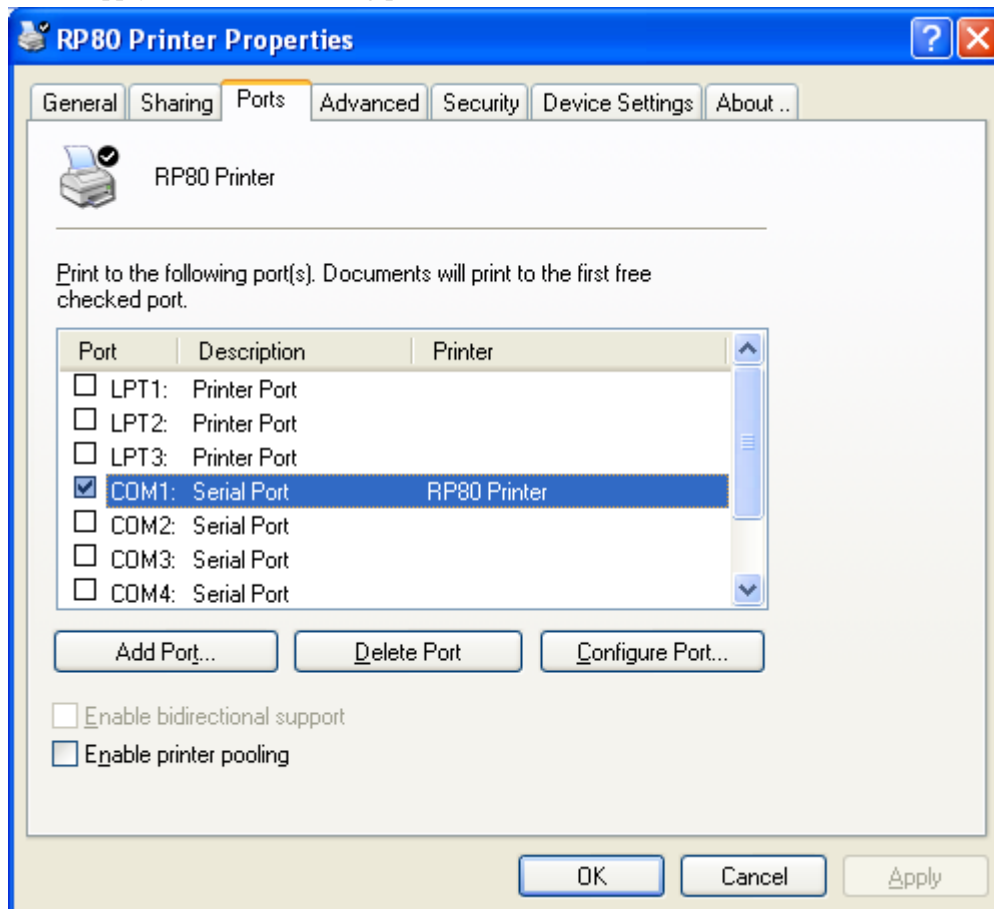
Print test page with serial communication port, click "ports" (see the following picture).



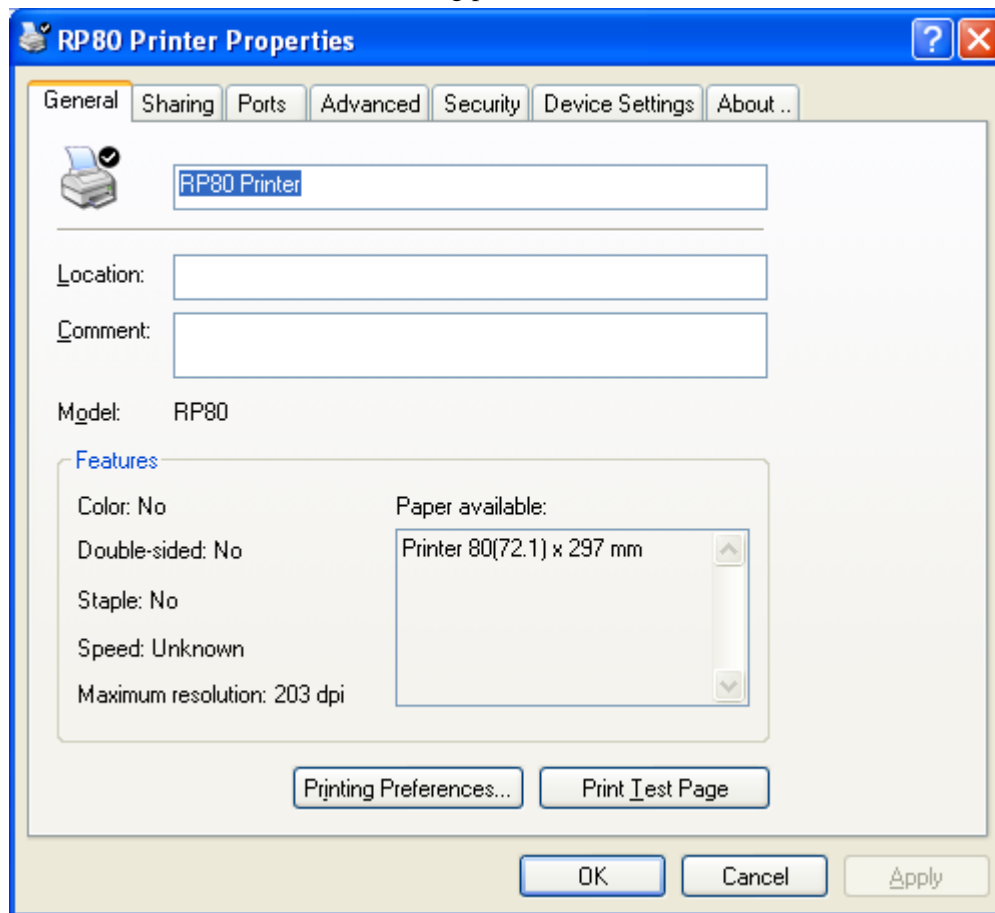
Choose the corresponding serial port. For example "com1:Serial Port", then click "Configure Port..." to set the serial port, Bits per second must be the same with the baud rate of the printer. Click "Ok" and finish the setting of the serial communication port(see the following picture)..



click “Apply,” (see the following picture).

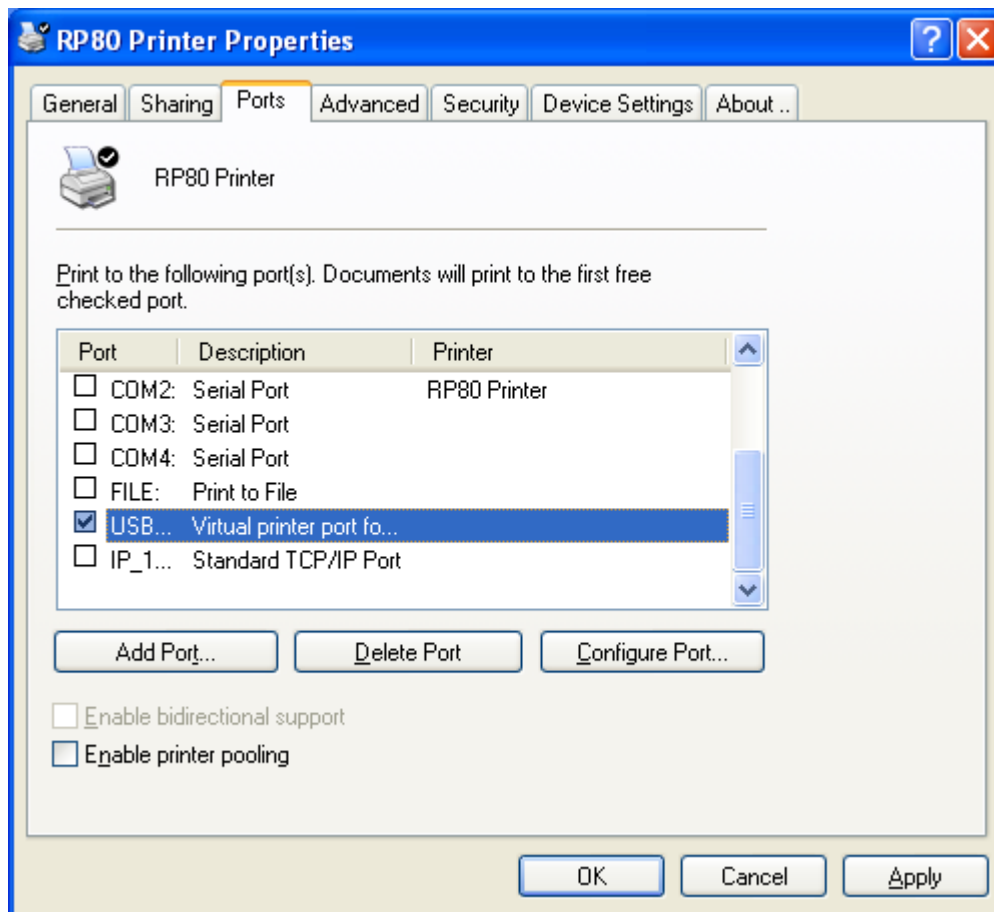


Then click “General”, (see the following picture)

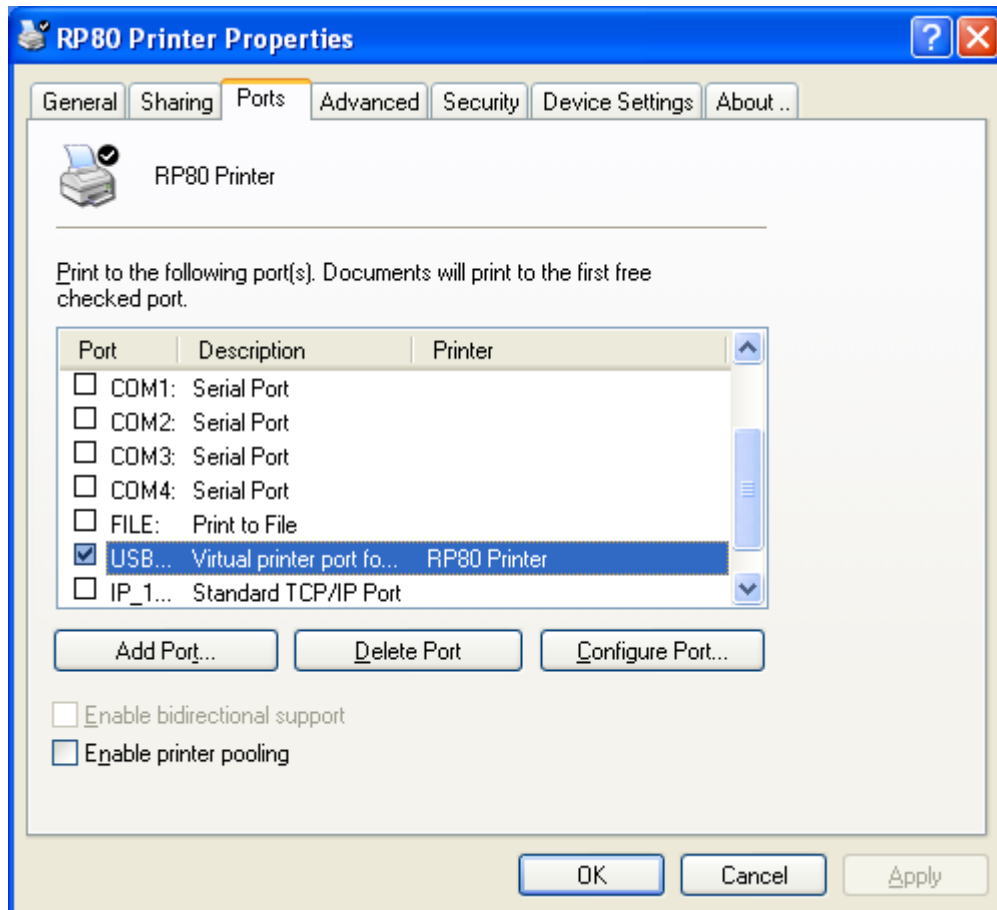


Then click “Print Test Page”. If the printer can print test page normally, the printer and your PC is set correctly and this communication port is working.

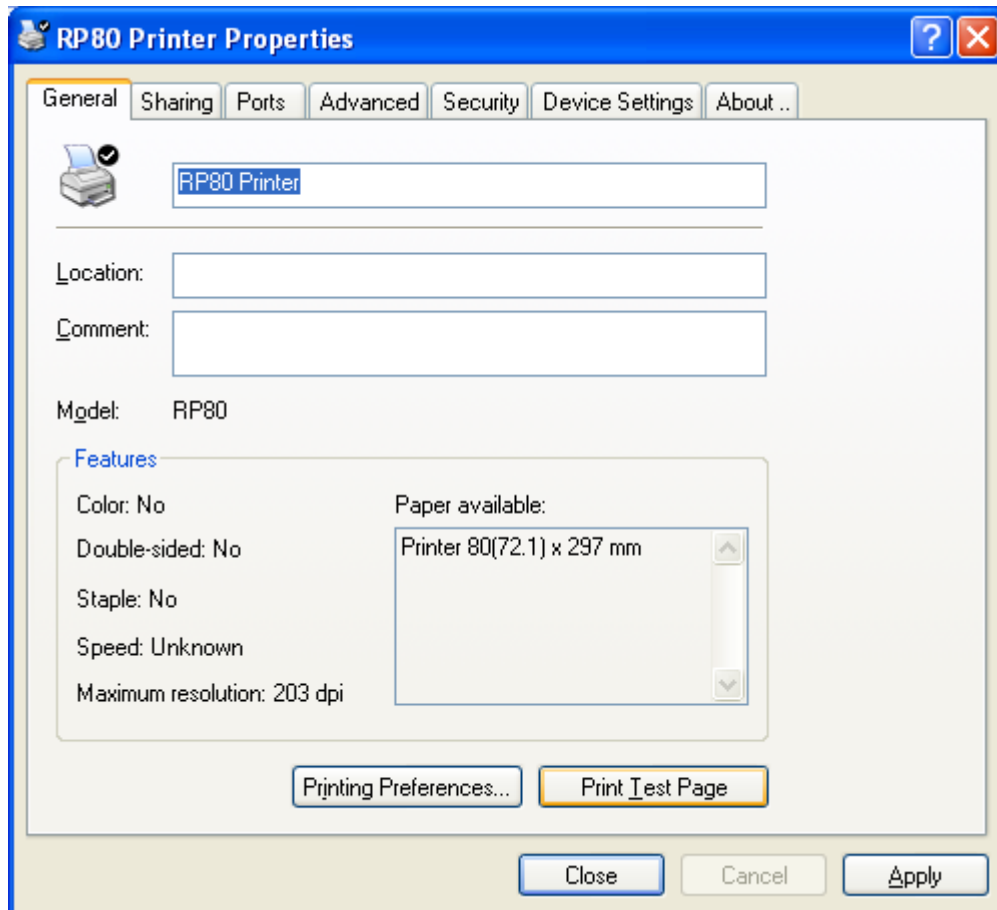
Test with USB communication port for the print test page



Choose “USB... Virtual printer port fo...” then click “Apply” (see the following picture)

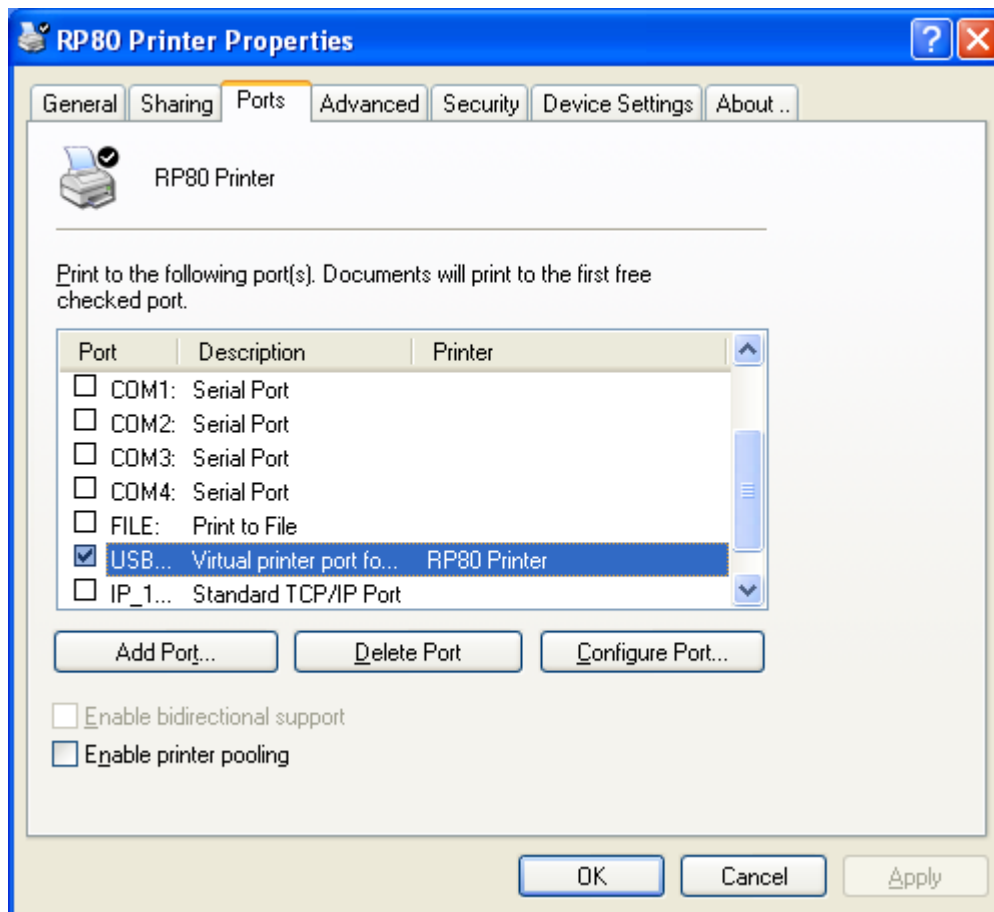


Then choose “General” (see the following picture)

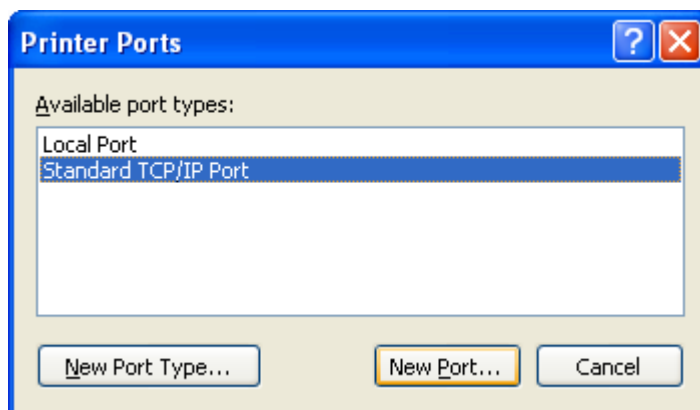


Then click “Print Test Page”. If the printer can print test page normally, the printer and your PC is set correctly and this communication port is working.

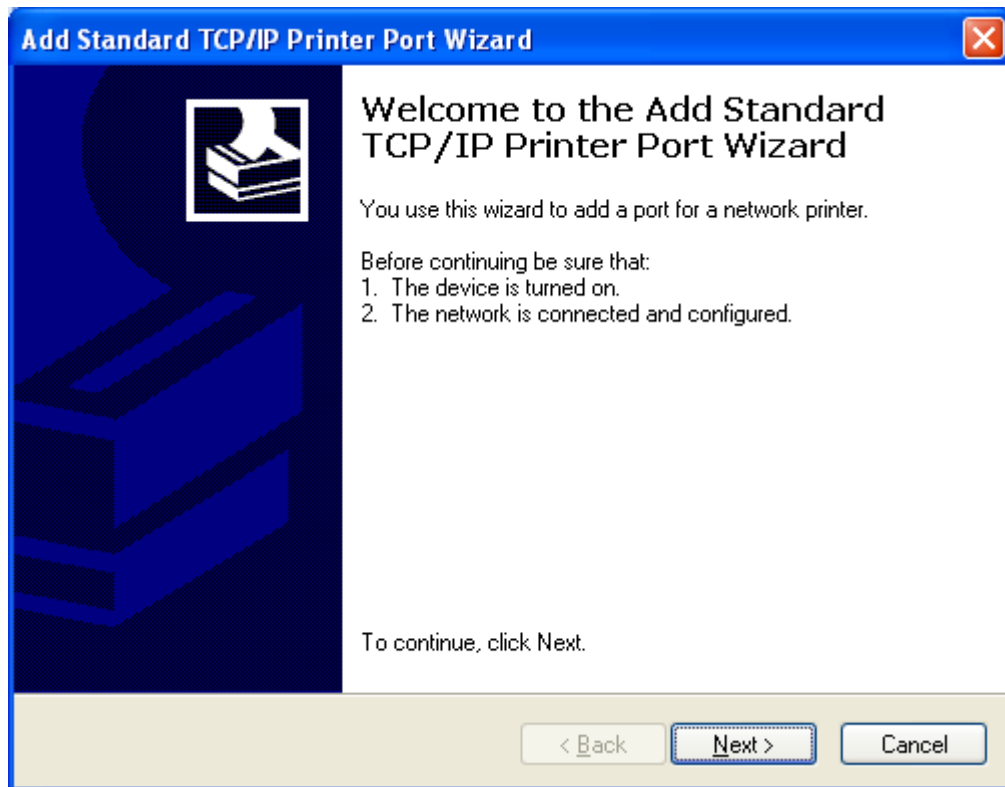
Test with Ethernet/LAN communication port for the print test page



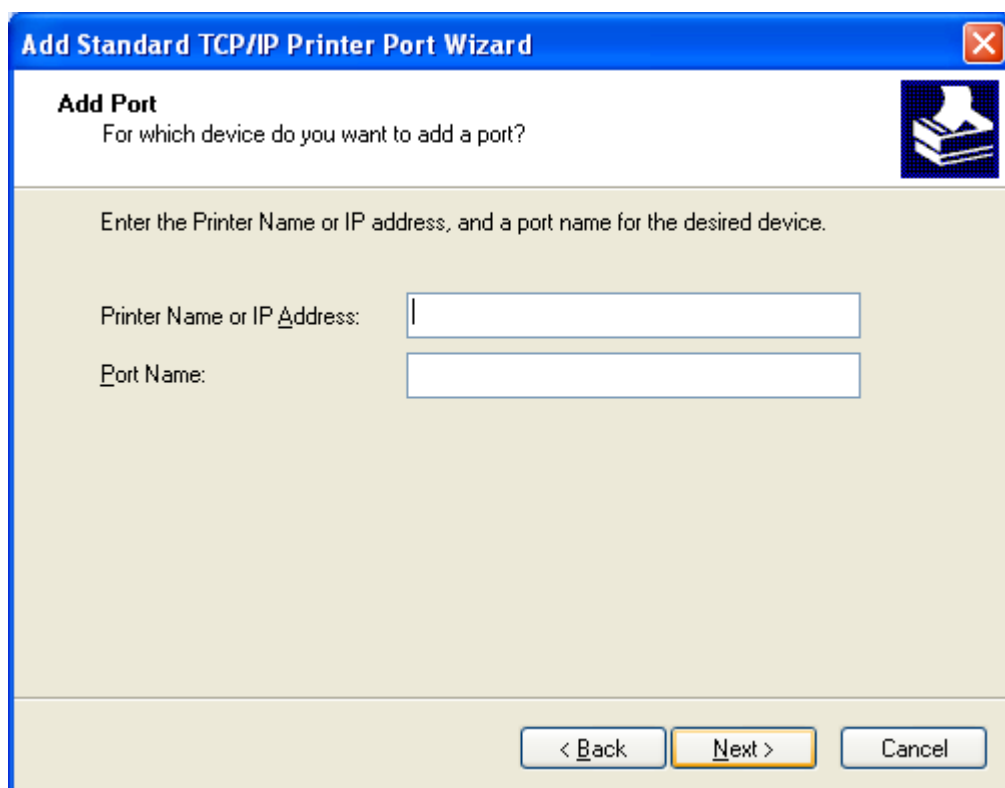
Click "Add Port..." (see the following picture)



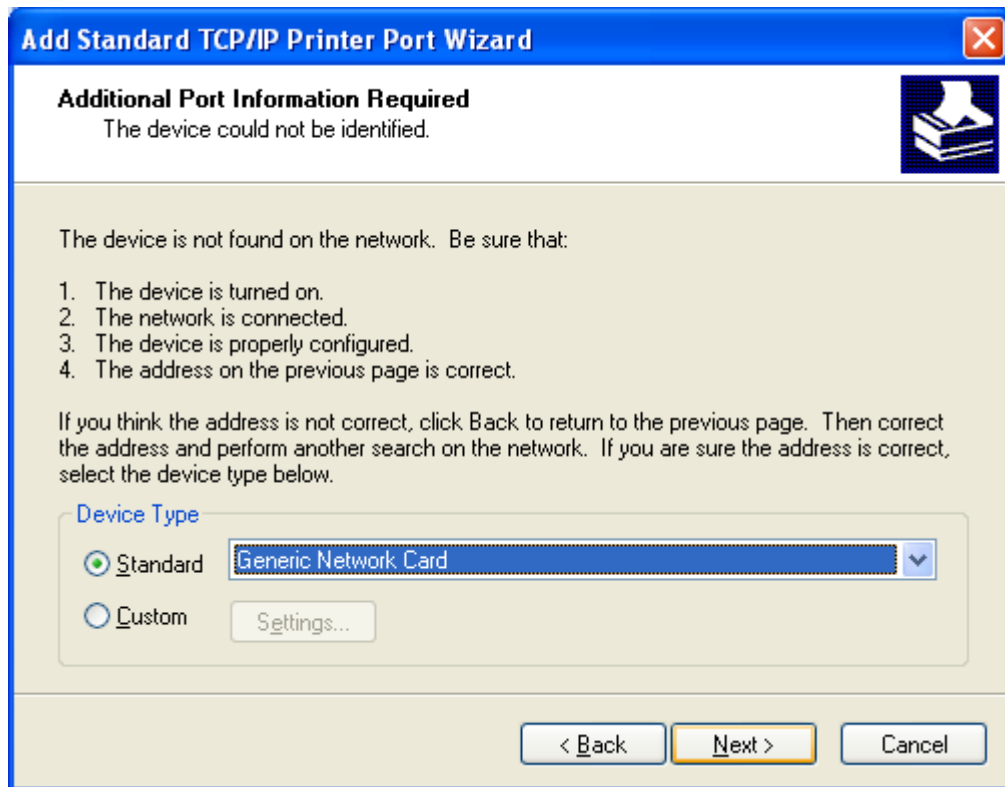
Then choose "New Port..." (see the following picture).



Click “Next” (see the following picture)



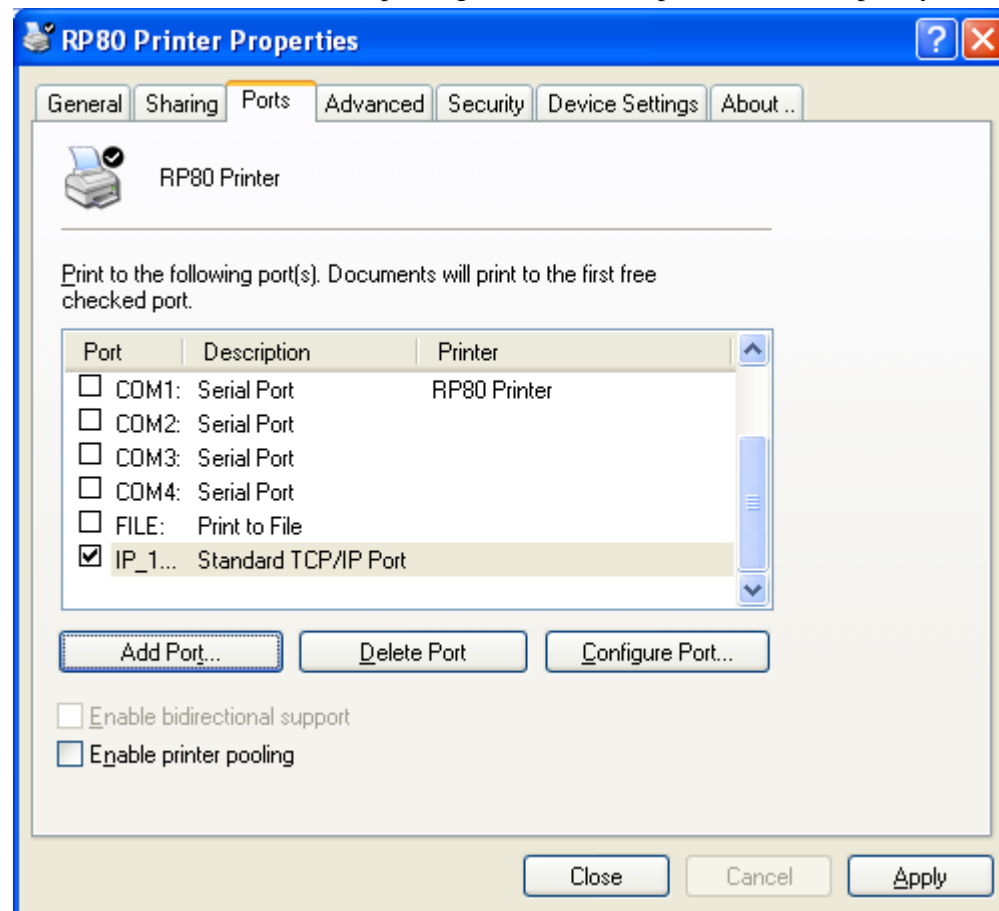
Input “192.168.1..87” after “Printer Name or IP Address”. Click “Next”, (see the following picture)



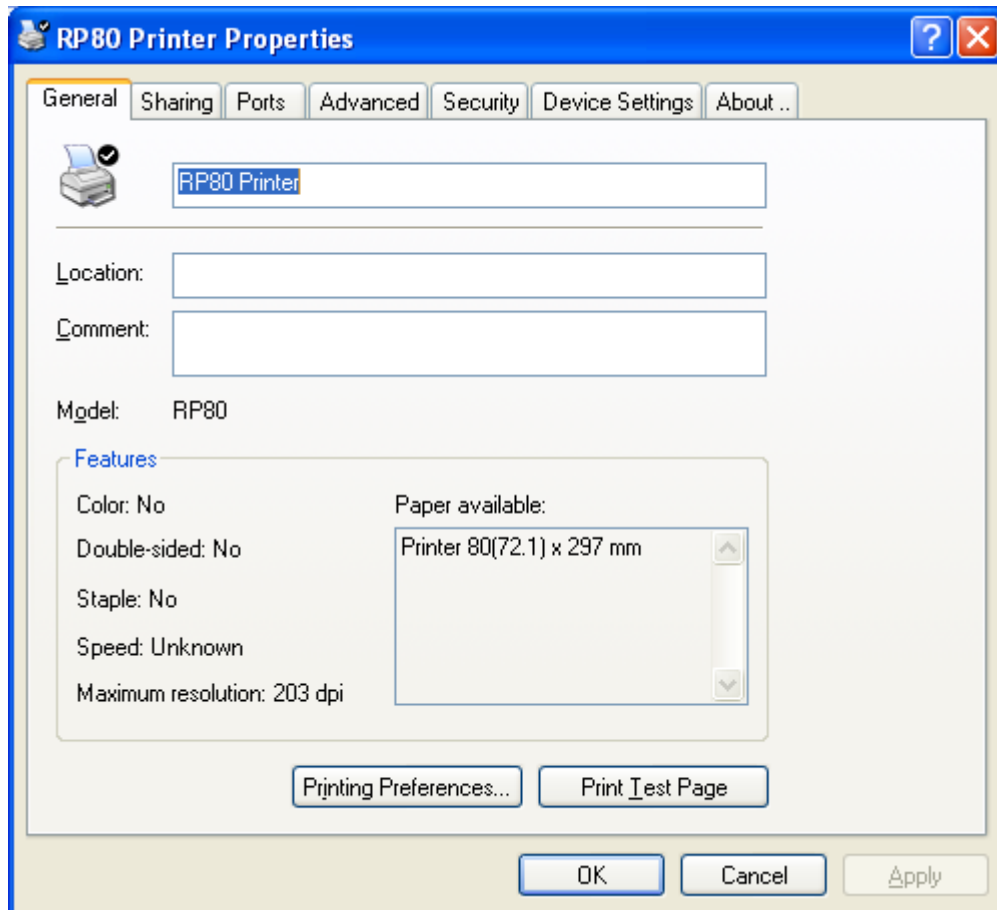
Click “Next” (see the following picture)



Click “Finish”. TCP/IP standard printing communication port is added completely.

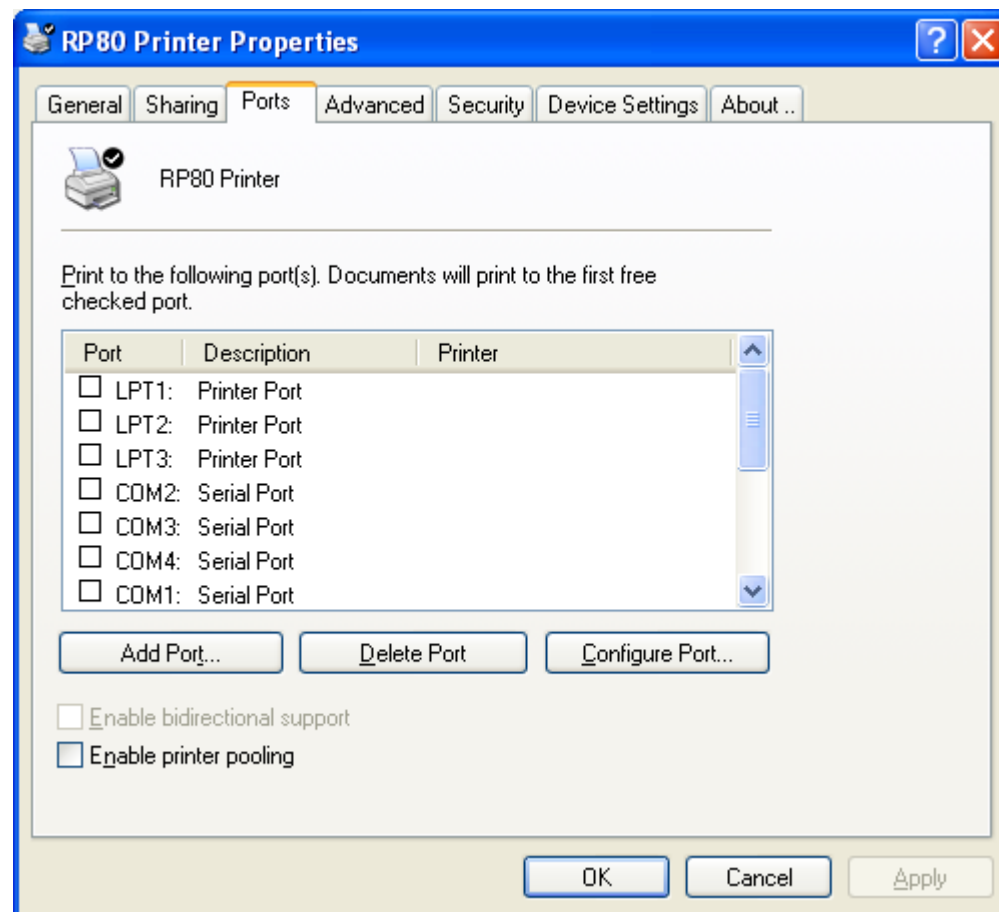


Click "IP_1... Standard TCP/IP Port", then click “Apply”. Next click “General” (see the following picture).

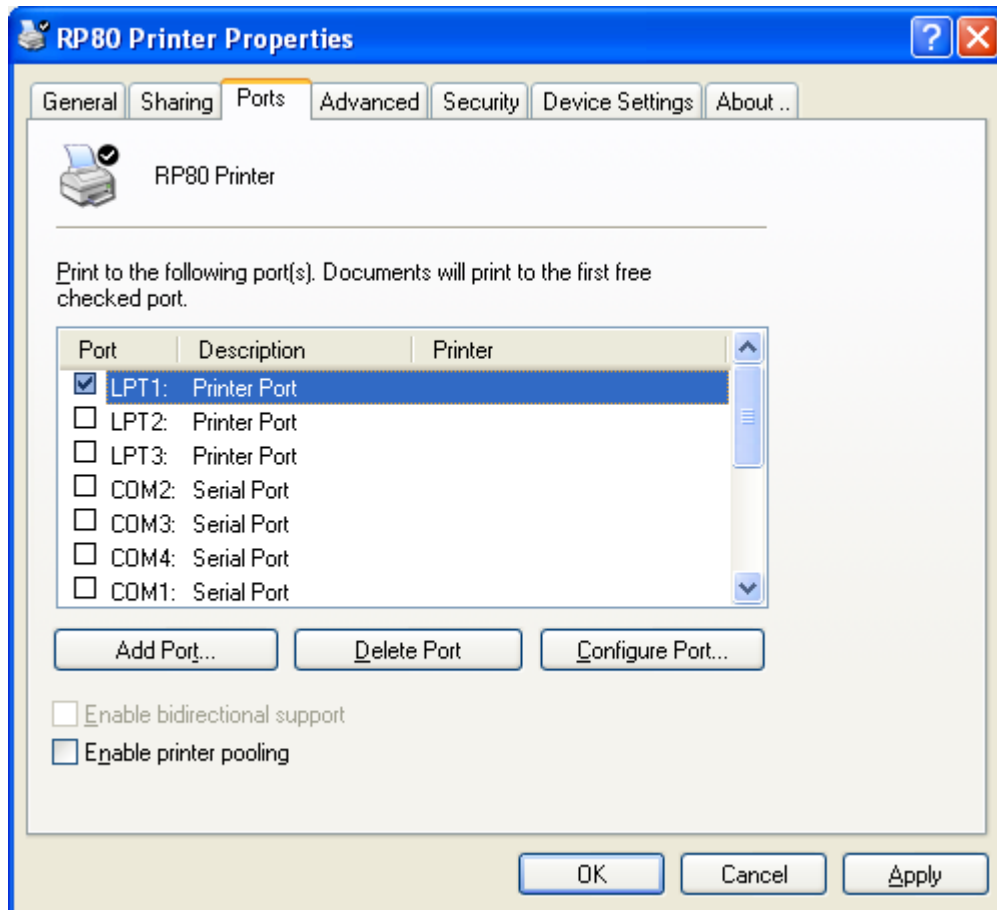


Then click “Print Test Page”. If the printer can print test page normally, the printer and your PC is set correctly and this communication port is working.

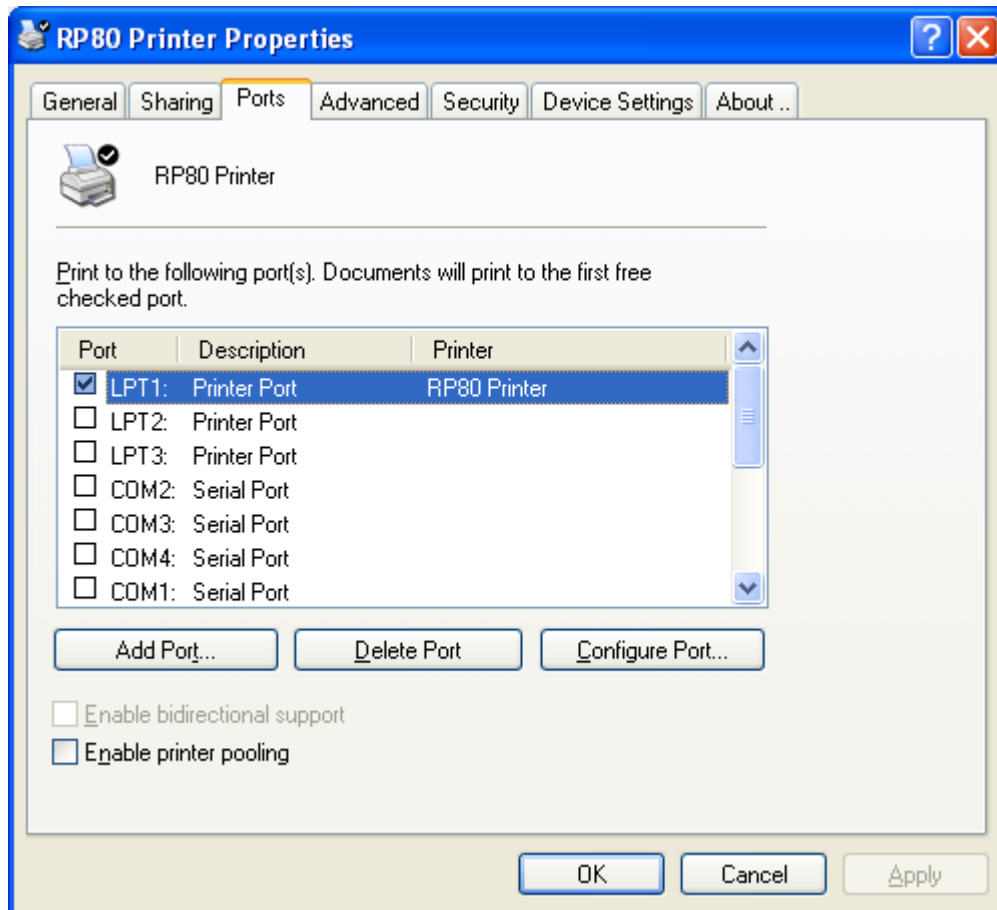
The instruction of using parallel port to print test page:



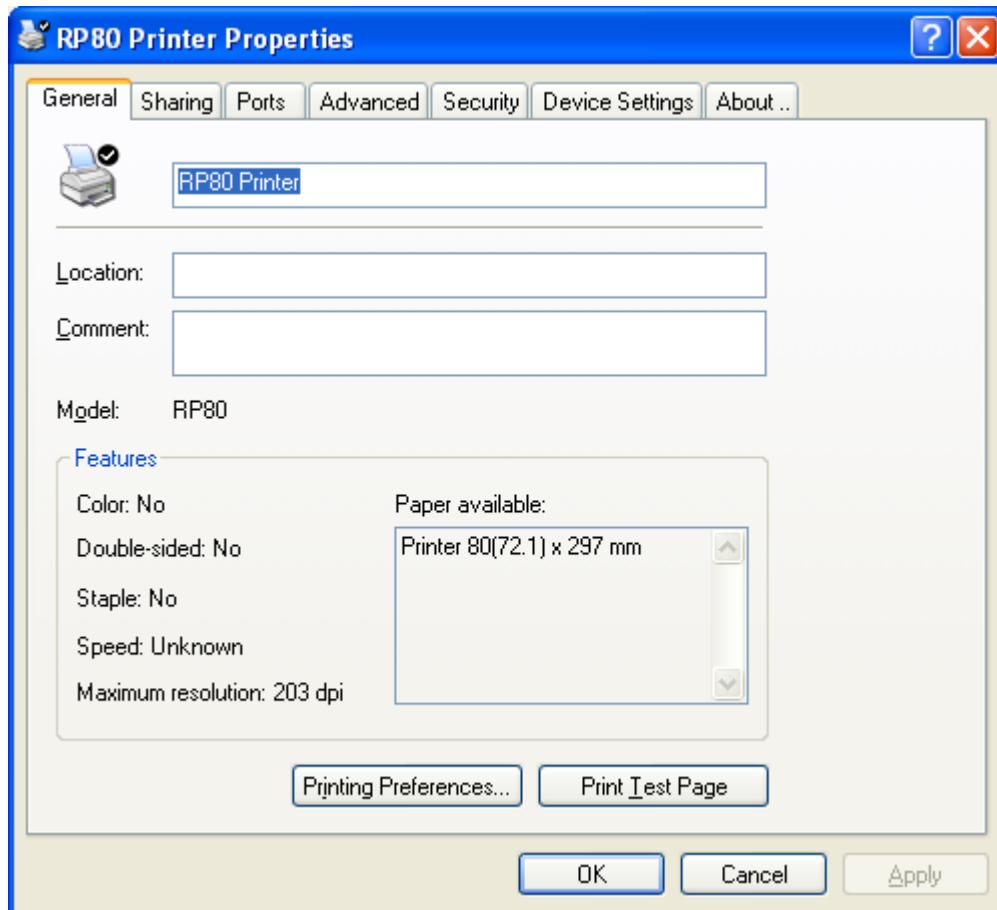
Select a port from “LPT1:Printer Port, LPT2: Printer Port, LPT3: Printer Port”, according to the position of parallel cable connected. Take “LPT1:Printer Port” for example.



Select "Apply" as shown in below image:



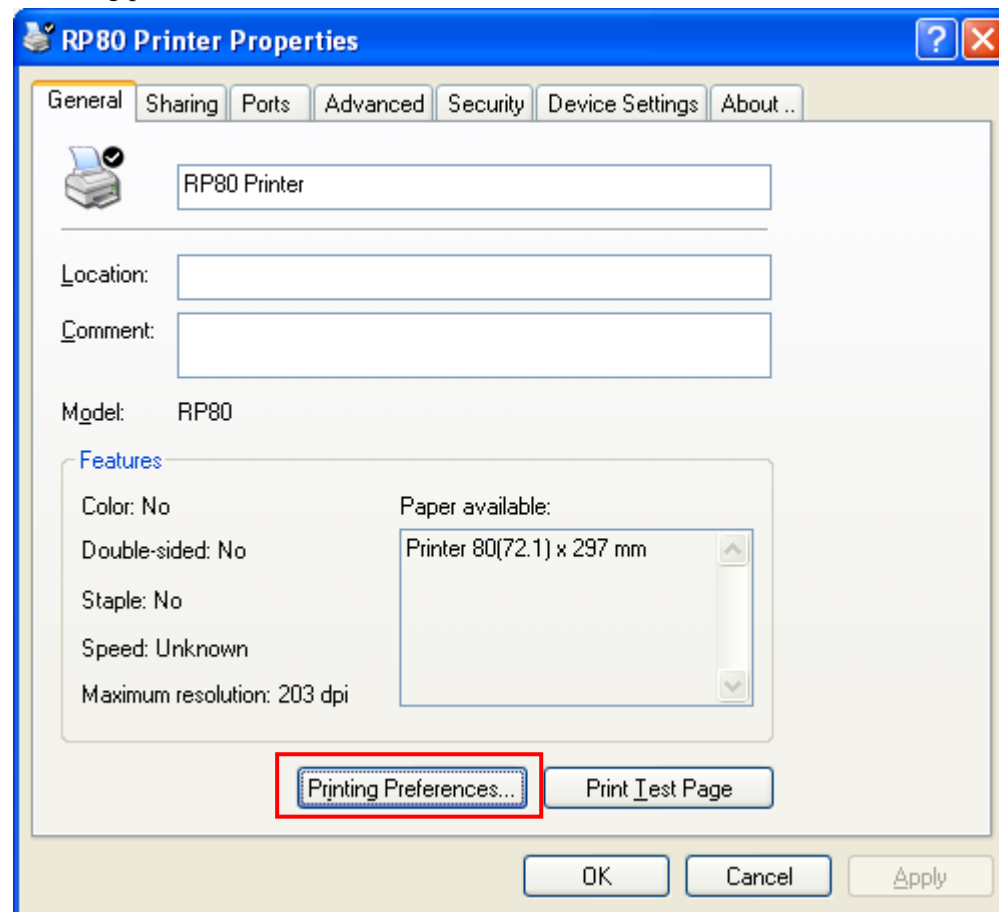
And then select “General” as shown in below image:



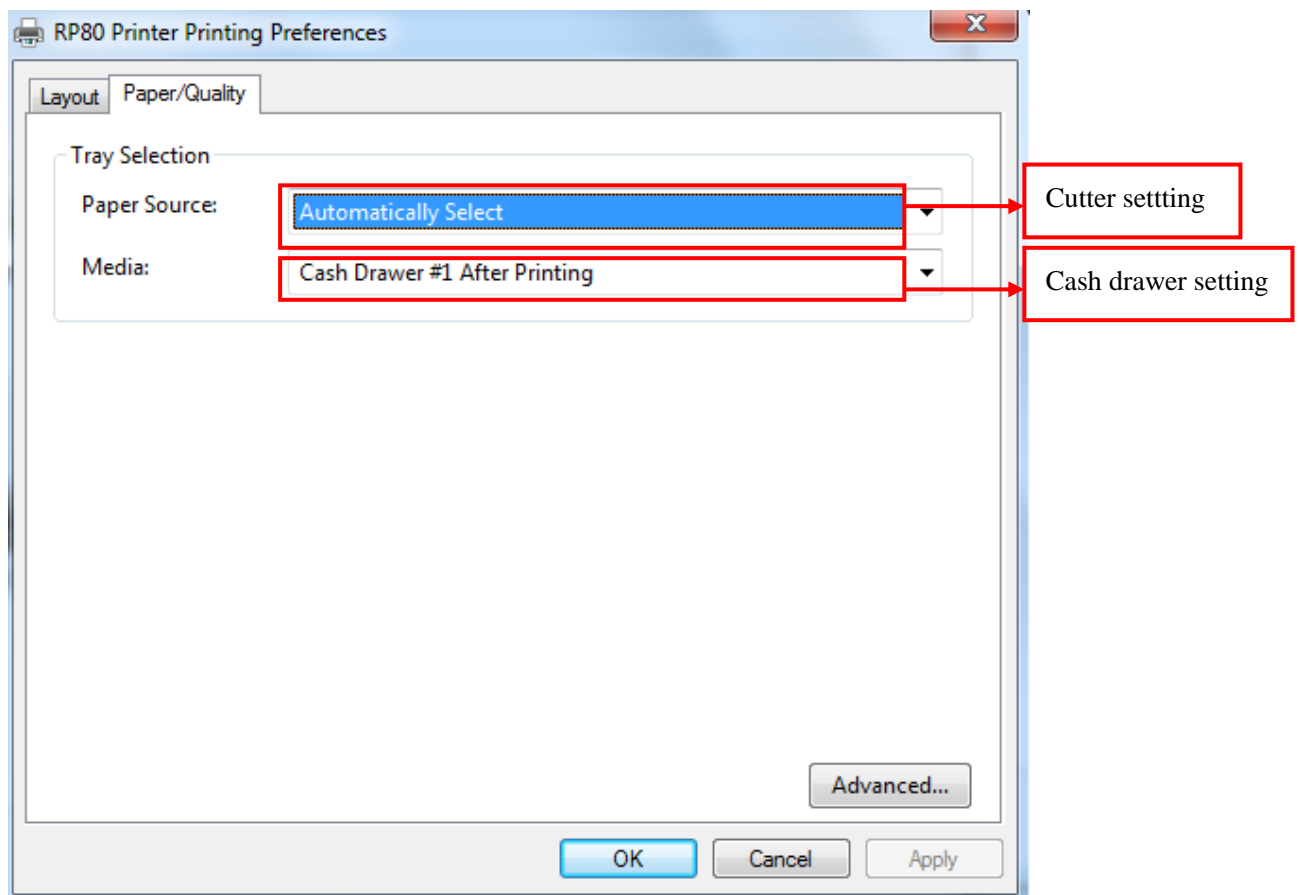
Select “Print Test Page”, if it can print test page normally, that means the printer is connecting to the PC correctly and with right configuration, and you can use this port for the printer

Cutter and Cash Drawer Settings

1. Choose “property” of RP80 → Choose “General” → Choose “Printing References”(See the following picture)



2. Choose “Paper/Quality” → “Paper Source” set the cutter(“Report Cut” means cut paper automatically after finish printing. → “Media” set the cash drawer → Choose “Apply” →”OK” finish setting.



Buzzer Setting:

If you need buzzer prompt before or after printing, please select Printing Properties\Printing References\Advance\Output Bin, as follows:

